



道通期货

*DotoFutures*



# 目录

.....

.....

.....

.....

.....

.....

.....

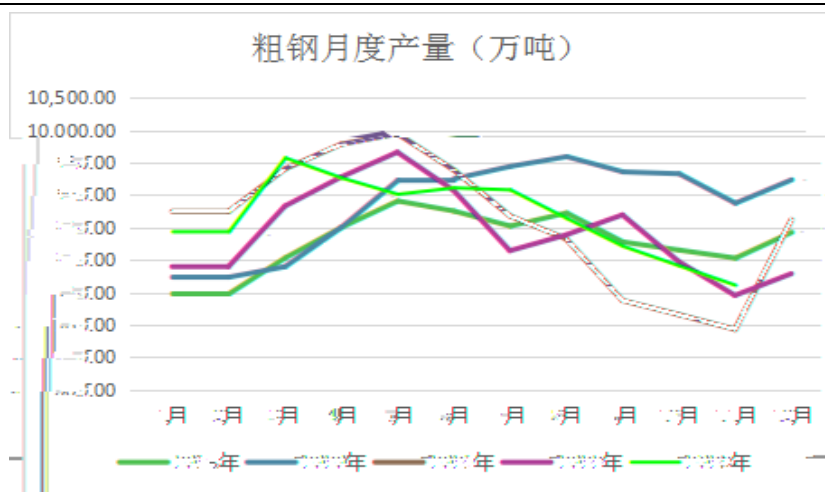
.....

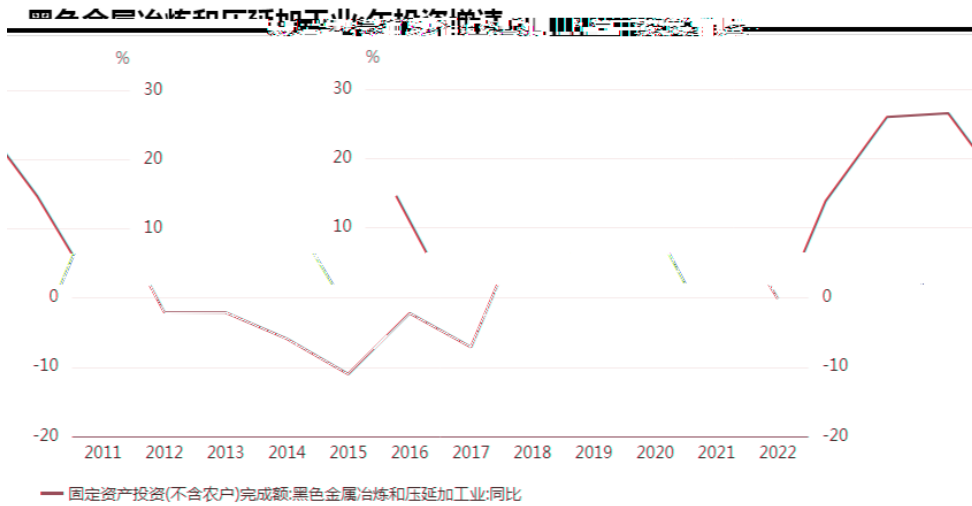
.....

.....

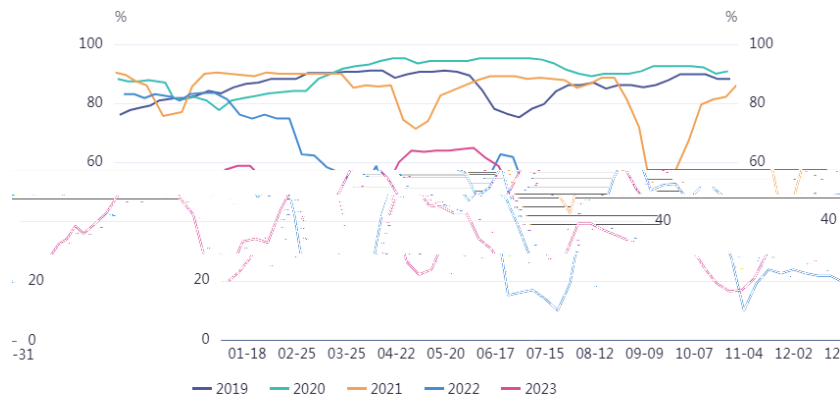




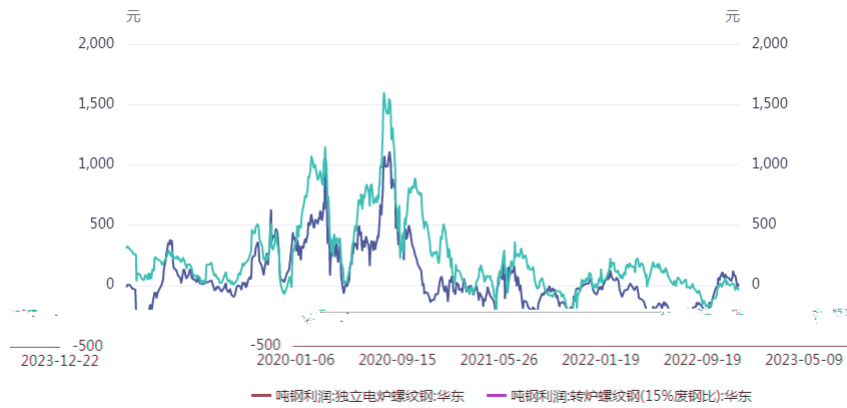




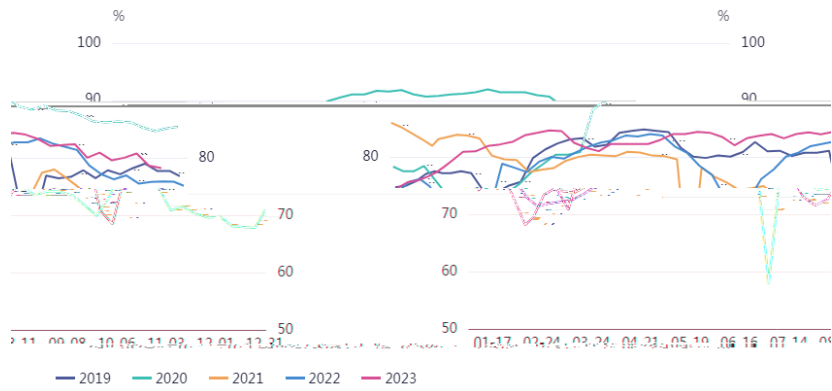
盈利钢厂:全国(样本数247家):当周值



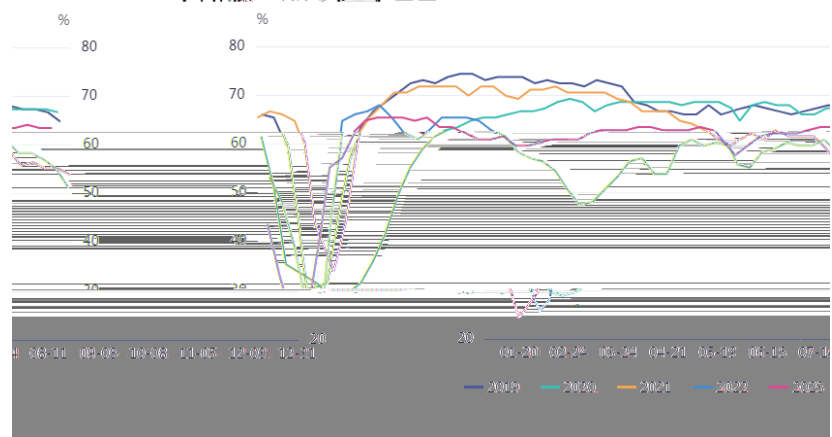
长短流程利润情况



高炉开工率:全国(样本数247家):当周值



样本钢厂高炉开工率:全国

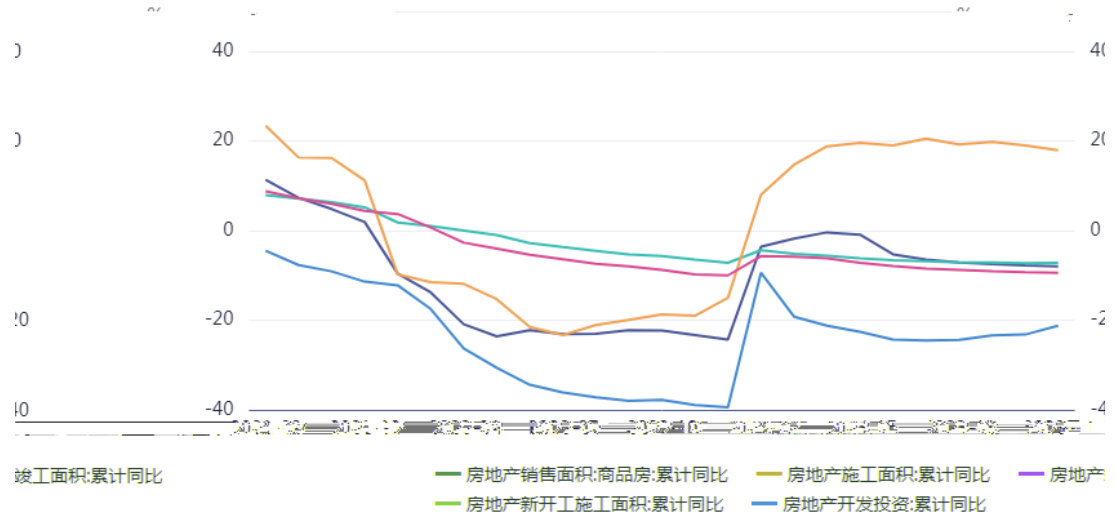






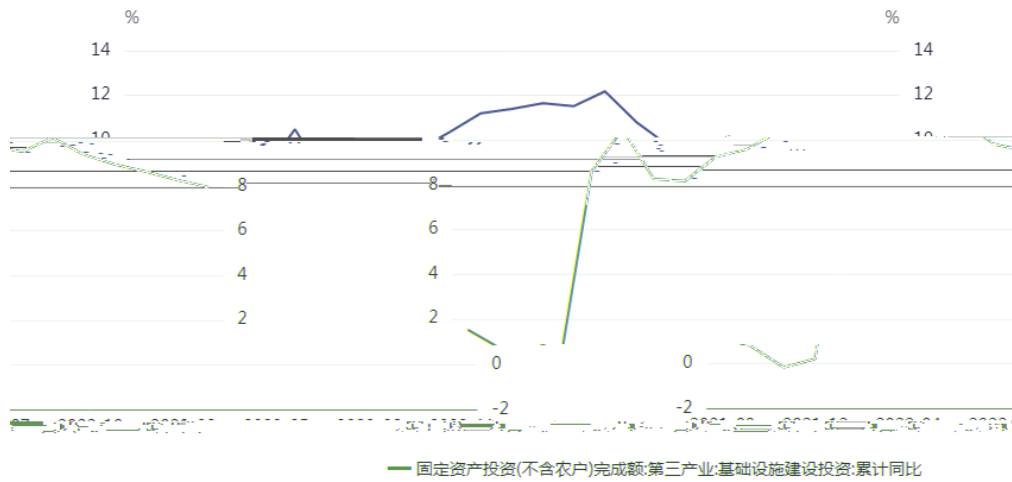


### 房地产数据累计同比情况

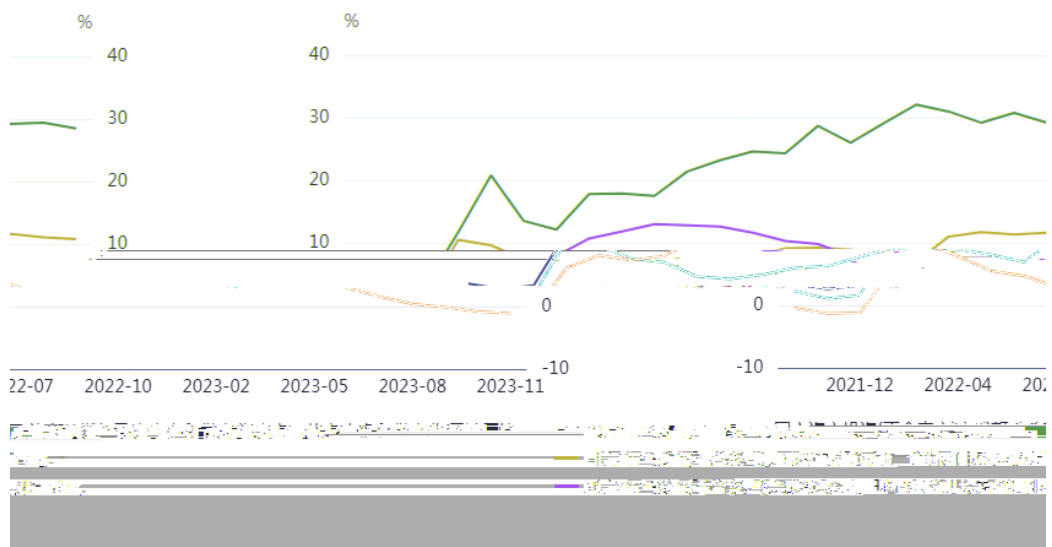




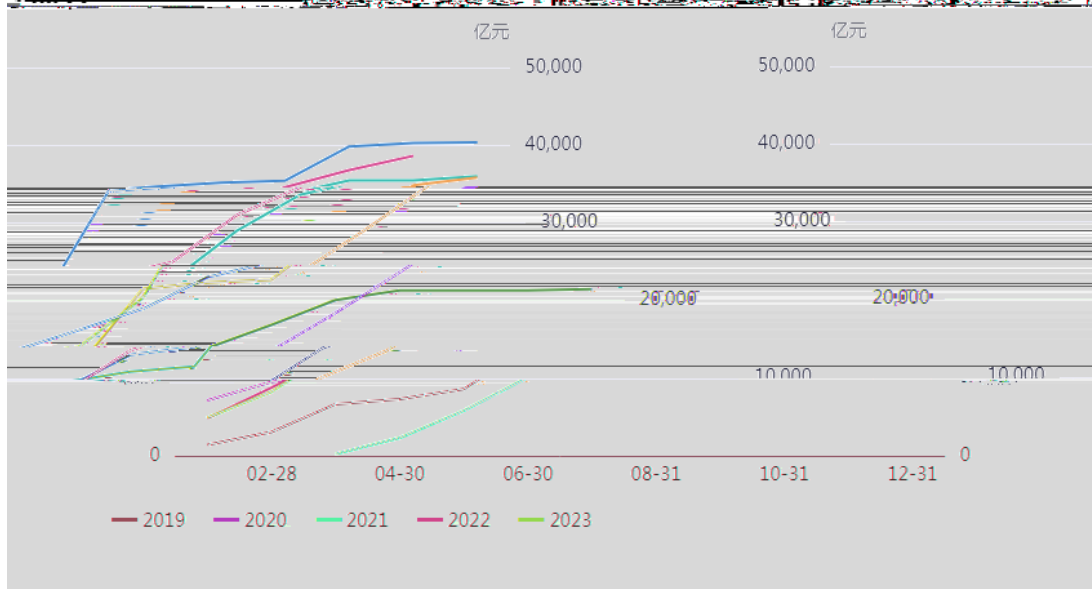
### 基础设施建设投资:累计同比

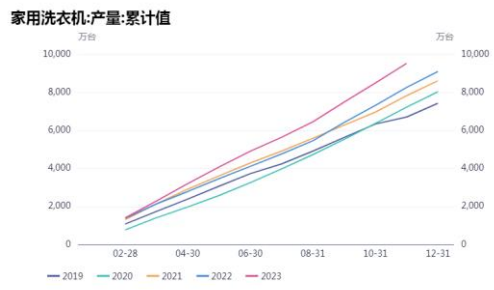
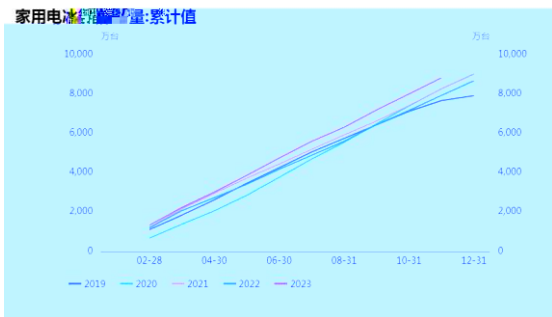
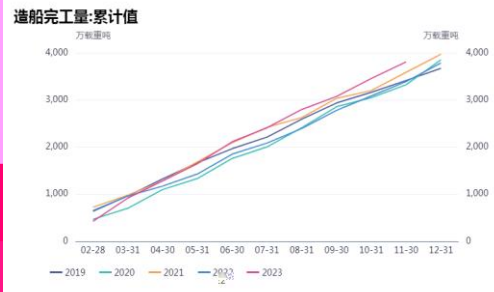
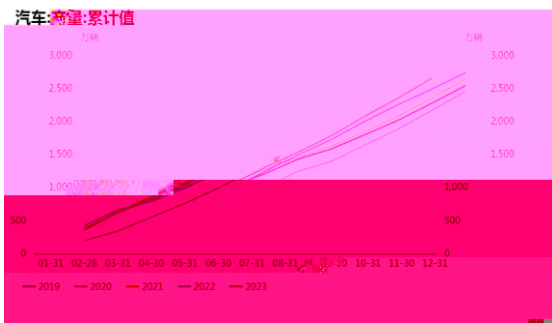


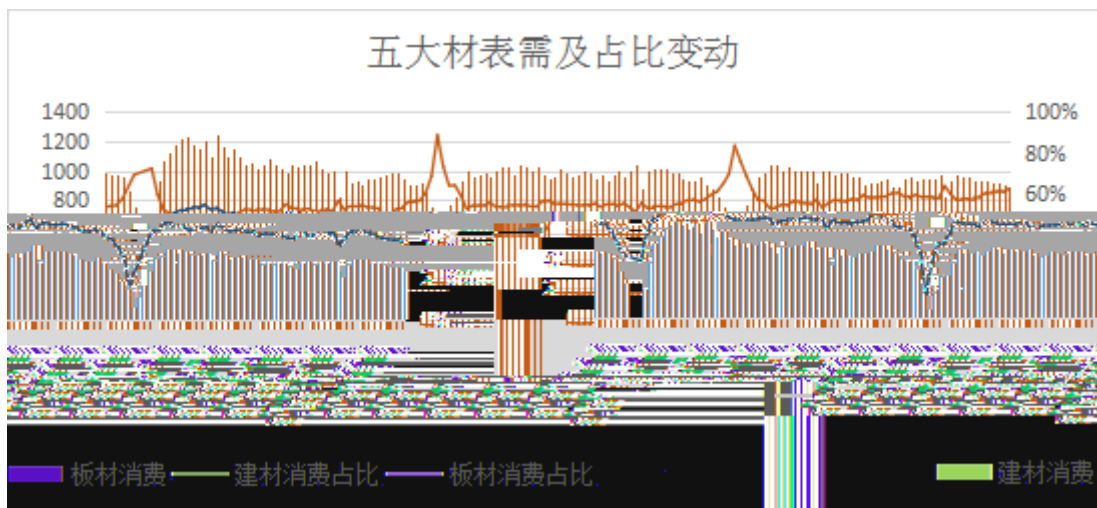
### 基建分项投资累计同比



地方政府债券发行额·按用途划分·新增债券·专项债券·累计值

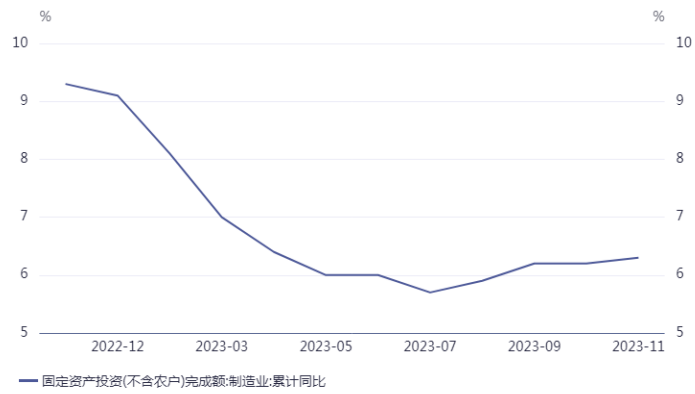






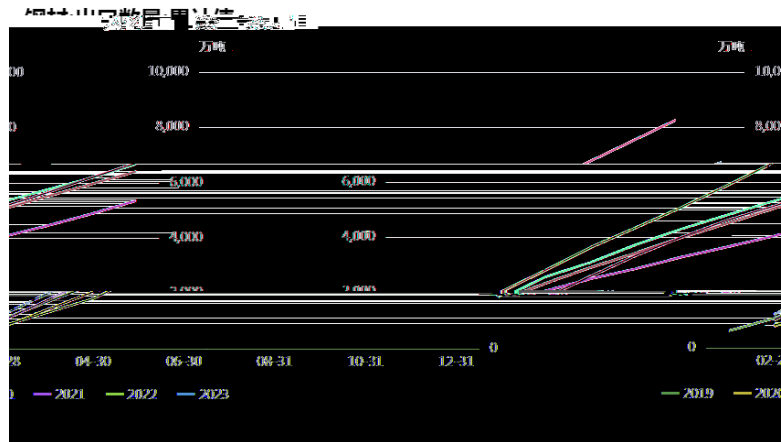


**固定资产投资(不含农户)完成额:制造业:累计同比**

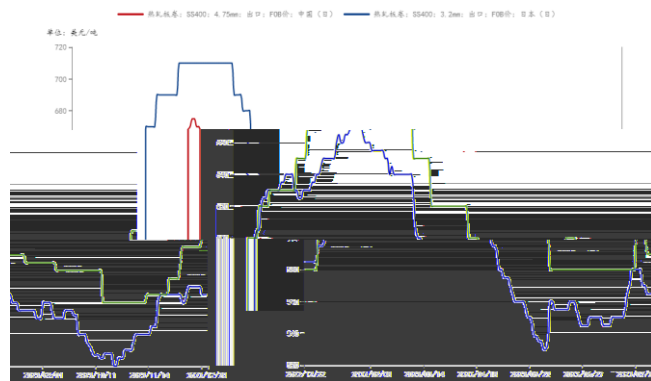


**规模以上工业企业:利润总额:制造业:累计同比**





中日热卷出口FOB价格走势







道通期货  
*DotoFutures*